

## SPANNING BACKUP FOR GOOGLE WORKSPACE

It's no longer adequate to only back up key on-prem servers. A myriad of threats to your organization's key Google Workspace data makes backing it up a necessity. Unitrends SaaS Backup, delivered with the Spanning brand as part of the Kaseya solution, protects your customer data and your organization with an enterprise-class, automated backup and recovery solution for Google workspace.



### Why You Need Google Workspace Backup



Human Error



Malicious Insiders



Illegitimate Deletion



Malware and Ransomware



Programmatic Errors



Hackers

Protect your organization today with the only backup solution for Google Workspace (formerly known as G Suite) that also includes integrated Dark Web Monitoring for stolen or compromised credentials. Spanning Backup for Google Workspace provides highly reliable and resilient SaaS backup for Google Workspace.



Google Workspace Marketplace

**TRUSTED BY MORE THAN 1.4 MILLION USERS.**

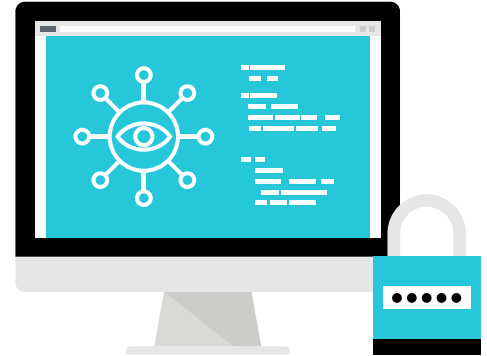
### Product Overview

Spanning Backup for Google Workspace is an enterprise-class, automated backup and recovery solution that makes backup as effortless as possible and eliminates the risk of data loss due to system crashes or accidental deletions.

This cloud-based backup service provides complete protection for **Gmail, Drive (including Team Drives), Calendars, Contacts and Sites**, with unlimited retention. Daily backups and fast self-service restore via an intuitive user interface means your data is always available when you need it.

## Unified BCDR

With our intuitive portal UniView, you can manage all your Unitrends backup environments, including backup appliances for servers and Google Workspace backups, from one screen. Got multiple locations, customers or tenants? Manage every location and backup through UniView, which includes two-factor authentication and BackupIQ for smart, custom alerting that gives IT admins only the notifications they need.



## KEY FEATURES

### Comprehensive protection

Spanning Backup for Google Workspace covers all the essential apps: Gmail, Google Drive (including Team Drives), Calendars, Contacts and Sites. With no limit on storage capacity or number of backups, your organization can rest easy knowing all your critical Google Workspace data is fully backed up and protected.

### Automated

Spanning runs in the background, providing daily, automated Google Workspace backup for users in your org. Following an initial full backup, incremental backups are performed automatically every day, allowing your IT team and end users to truly “set it and forget it.”

### On-demand backup

In addition to automated backup, Spanning gives you the flexibility to run manual backups at any time. These can be performed by admins or end users and you can choose to back up user accounts in their entirety or simply select any combination of apps within Google Workspace to focus on. You have full control and can run manual Google Workspace backups as often as you see fit — there’s no limit.

### Status monitoring

Check your Spanning dashboard to monitor the state of your most recent Google Workspace backups. Admins can view the backup health for each Google Workspace user within their domain and drill down to inspect and resolve any issues before they impact the integrity of future restores. On top of that, admins can opt to receive daily, weekly or monthly email notifications to keep them informed of their Google Workspace backup status.

## Transparent reporting

Use the audit log for an immutable, detailed record of every action done by any user or admin within Spanning Backup for Google Workspace. You'll see a list of activities that have taken place and will be given information about what was done, who it was done by and when it happened. The audit log can also be exported to a CSV file at any time for analytical and reporting purposes. Every action concerning your Google Workspace backup is recorded to provide maximum transparency and accountability.

## End user self-restores

Save IT time and reduce help desk costs by empowering your end users to utilize Spanning Backup for Google Workspace on their own. Licensed users can learn to restore their own lost or misplaced Gmails, Drive files, folders and content with minimal training and zero IT intervention. You can also delegate Help Desk Admin rights to desired non-Google Workspace admins such as HR personnel. With more empowered users, restores can be accomplished quickly to ensure maximum productivity.

## Point-in-time restore

Restore content from the latest Google Workspace backup of a known good state. With daily, automated backup and unlimited on-demand backup at your disposal, you have the power to restore data from any previous date in which Spanning was in place. Regardless of when the data was altered or lost, your organization will have a backup point to count on.

## Granular, search-based restore

Spanning Backup for Google Workspace allows users and admins to search their backups for individual files and emails of interest. This can be accomplished in a variety of ways since Gmail backup can be searched by author or subject, and Drive files can be located by folder, filename or version history. These may be used individually or together for desired granularity, and when combined with the point-in-time restore capabilities, your organization will be able to locate exactly what's needed for restoration.

## Team Drives restore

In addition to individual Drive files, Spanning allows for the backup and restore of your Team Drives data with the inclusion of folder structure and sharing settings. Team Drives data will be restored back into the same Team Drive or Spanning will create a new Team Drive upon restore if the existing Team Drive has been deleted.



## Cross-user restore

Admin users can easily restore Google Workspace backup data from one user's account to the live Google Workspace account of another user within the same domain. This feature can be extremely useful in the off-boarding and on-boarding process if a user has been removed from the domain and a new user is stepping in. It can also come in handy should you need to transfer ownership of data from one user to another — such as an admin or a temporary account — for any number of reasons.

## Google Workspace credential protection

Optional Dark Web Monitoring alerts Google Workspace administrators when their employees' emails and passwords have been compromised, enabling them to take proactive steps to secure accounts at risk. They can then leverage Spanning's powerful audit reporting and search capabilities to determine if malicious activity has taken place and restore any corrupted data in just a few clicks.

# SECURITY

Unitrends and Spanning Backup employs multiple layers of operation and physical security to ensure the integrity and safety of your Google Workspace data, including:



## SOC 2 Compliance

Spanning is SOC 2 Type II certified, a rigorous evaluation of repeatable internal operational and technical controls, information technology processes and trust services principles.

## Application-level authentication

Spanning accesses SaaS systems using the OAuth 2.0 protocol rather than less secure service accounts and passwords.

## Strong encryption

Spanning Backup protects data at rest with 256-bit AES object-level encryption (one of the strongest block ciphers available) with unique, randomly generated encryption keys for every single object and a rotating master key protecting the unique keys. All data in transit is also protected with Transport Layer Security (TLS) encryption.

## Intrusion detection

Our systems constantly guard against intrusion with log analysis, file integrity checking, policy monitoring, rootkit detection, real-time alerting and active response.

## Compartmentalized access

Access to production servers is granted only to named Spanning employees who have specific operational requirements. Changes to the production environment access control list are tracked and auditable.

## HIPAA compliance

Spanning's service is HIPAA-compliant. If you are interested in learning more, please contact your sales representative or partner.

## Cloud Security Alliance member

Spanning is a member of the Cloud Security Alliance (CSA), a not-for-profit organization with a mission to promote the use of best practices for providing security assurance within Cloud Computing, and to provide education on the uses of Cloud Computing to help secure all other forms of computing.

## Skyhigh Enterprise-Ready

Spanning Backup has been awarded the Skyhigh CloudTrust™ rating of "enterprise-ready." Skyhigh Enterprise-Ready cloud services fully satisfy the most stringent requirements for data protection, identity verification, service security, business practices and legal protection.

## Third-party certifications and audits

Spanning Backup operates within the Amazon Web Services cloud, which is ISO 27001 certified, has completed multiple SAS-70 Type II audits, and publishes a SOC 2 report under both the SSAE 18 and the ISAE 3402 professional standards.

## Confidential security & compliance communications

Spanning is committed to the reporting of security and compliance issues. Further, in order to obtain objective feedback on potential issues, Spanning maintains a direct line of communication to the Principal Security Manager (and Security Team). This serves as a mechanism to enable anonymous or confidential communication of critical/sensitive security vulnerability issues when normal channels are inoperative or ineffective.

## Privacy & security certifications

Spanning Backup has also earned BBB EU PRIVACY SHIELD (covered under Kaseya US LLC), operated by the Council of Better Business Bureaus Privacy Certification, and is certified under the US-EU and Swiss-US Privacy Shield.

Spanning is compliant with the Regulation (EU) 2016/679 (General Data Protection Regulation). For more information about our compliance, please see our GDPR page. For our Data Protection Addendum, please reach out to your sales representative.





## GET STARTED

Protect your Google Workspace data and your business with the highest-rated backup and recovery solution in the Google Workspace Marketplace.

To get started, visit

[unitrends.com/get-started](https://unitrends.com/get-started)

## ABOUT UNITRENDS

Unitrends makes efficient, reliable backup and recovery as effortless and hassle-free as possible. We combine deep expertise gained over thirty years of focusing on backup and recovery with next generation backup appliances and cloud purpose-built to make data protection simpler, more automated and more resilient than any other solution in the industry.

Learn more by visiting [unitrends.com](https://unitrends.com) or follow us on LinkedIn and Twitter @Unitrends.

**UNITRENDS**  
A Kaseya COMPANY

